

TUNGSRAM

HID 150W LED Lamp (220-240V)

Installation Guide

LED 150W/HID/740/E40 TU
LED 150W/HID/750/E40 TU

LED HID lamp is suitable to replace following HID lamps (not Limited to): HPS100/150/250W, CMH100/150/250W, Mercury 250/400W, QMH250/400W.



BEFORE YOU BEGIN

Read these instructions completely and carefully. To avoid personal injury and/or product damage, all of the instructions below must be followed.

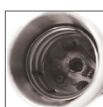
WARNING

RISK OF FIRE OR ELECTRICAL SHOCK: LED retrofit kit installation requires knowledge of luminaire and electrical systems. If not qualified, do not attempt installation. Contact a qualified electrician. Install this kit only in luminaires that have the construction features and dimensions shown in the drawings, and where the input rating of the retrofit kit does not exceed the input rating of the luminaire. Do not make or alter any open holes in an enclosure of wiring or electrical components. To prevent wiring damage or abrasion, do not expose wiring to edges of sheet metal or other sharp objects. Installer should not disconnect existing wires from lamp holder terminals, but should cut existing lead wires away from the lamp holder and make new electrical connections to lamp holder lead wires by employing applicable connectors. This lamp operates direct from 220-240V mains. Do not use with ballast or ignitor. Do not connect to voltage higher than 277 volts. Ensure Misapplication fuse and fuseholder are connected between Phase or Hot lead and the eyelet connection of the lamp holder per the wiring diagram. Ensure Safety Tether is attached to lamp and luminaire per instructions. Not for use with Dimmers. This lamp is not suitable for household and similar use.

CAUTION



GOOD Socket



Damaged Socket

RISK OF FIRE OR ELECTRICAL SHOCK:

- Apply provided re-lamp warning sticker onto the fixture in a location where readily visible by the user during and after installation

RISK OF ELECTRICAL SHOCK, OVERHEATING OR LAMP DAMAGE

- Check the condition of the E40 socket in the fixture. If the socket shows signs of corrosion, arcing, or any other type of damage like the pictures on the left, replace the socket with a new one.

CAUTION/ATTENTION/ATTENZIONE: This luminaire has been modified to operate LED lamps. Do not attempt to install or operate HID lamps in this luminaire. Use only LED 150W/HID/740/E40 TU or LED 150W/HID/750/E40 TU lamps. Replace fuse with type 2AG, 4A, 350V slow-blow fuse, Littelfuse 0209004 MXP or equivalent. Ce luminaire a été modifié pour l'emploi de lampes à DEL. Ne tentez pas d'installer ni d'utiliser des lampes DHI dans ce luminaire. Utilisez uniquement des lampes à DEL 150W/HID/740/E40 ou 150W/HID/750/E40 de TU. Remplacez le fusible avec un fusible Littelfuse, n° de pièce 0209004 MXP ou l'équivalent type 2AG, 4 A, 350V, fusible à action retardée). Questo apparecchio è stato modificato per funzionare con una lampada a LED. Non provare ad installare o far funzionare una lampada HID in questo apparecchio. Usare solo lampada LED TU 150W/HID/740/E40 o lampada LED TU 150W/HID/750/E40 TU. Sostituire il fusibile tipo 2AG, 4A, 350V, fusibile ad azione lenta - Littelfuse 0209004 MXP o equivalente.

tungsr.com/installations

Note 1: LED HID 150W retrofit Lamp installation with HID Ballast / Ignitor / Capacitor or external LED driver voids the warranty.

Note 2: LED HID 150W retrofit Lamp installation with voltage above 277 VAC or dimmer voids the warranty.

Note 3: Replace fuse only with Type 2AG, 4Amp, 350Vac, Slow Blow, Part # 0209004 MXP from Littelfuse or equivalent.

Note 4: Operation at high ambient temperature may reduce lamp life.

Save These Instructions

Use only in the manner intended by the manufacturer. Not for use in emergency light fixtures or exit signs.

Parts List

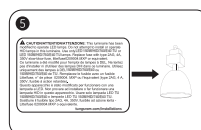
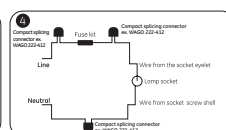
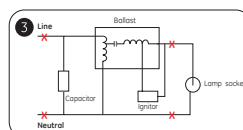
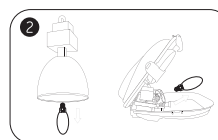
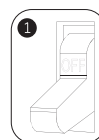
- 1 LED lamp with the tether kit
- 1 fuse kit
- 1 re-lamp warning label shown in the picture below

Tools required

- Screwdriver
- Wire stripper/cutter
- Terminal block with diameter larger than 1.0 mm, insulation strength need larger than 300VAC

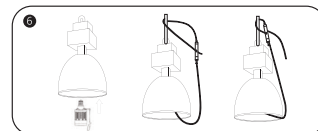
Installation instruction:

- 1) Turn off the power to the fixture.
- 2) Remove existing HID lamp from the fixture.
- 3) Open the fixture's junction box and bypass the HID ballast, ignitor (if there) and the capacitor (if there) by disconnecting the line and neutral wires and socket wires in the locations with "CROSS" marks in the schematic diagram on the right.
- 4) Connect the line to the wire from the socket and the neutral to the wire from the socket with Compact splicing connector ex. WAGO 222-412 with diameter larger than 1.0 mm, insulation strength need larger than 300VAC. The fuse kit in the package should be installed on the line as shown in the schematic diagram on the right.
- 5) Close the fixture's junction box. Clean the area before applying the re-lamp warning label to a visible location on the fixture.



For open fixture and fixture with wire cage

- 6) Install GE HID LED retrofit lamp into the socket. Loop the wire of the tether around a load bearing building structure, then insert and lock the wire into the other end of the locker. Minimize the length of the wire attached to the lamp. Zip tie extra loose wire if necessary.



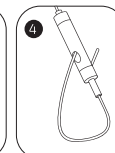
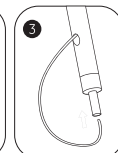
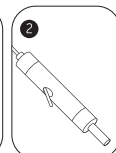
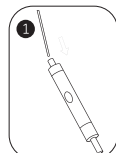
For enclosed fixture

- 6) Tether kit can't be used for enclosed fixture applications.
- 7) Turn on the power to the fixture.

WARNING

RISK OF FIRE OR ELECTRICAL SHOCK:

- Install provided tether kit.
- Follow step 1 to step 4 on the right to lock the tether wire to the locker.
- Only use the tether provided by Tungsram Group.



Dimming not allowed



Lamp not suitable for emergency operation



Lamp to be used in dry conditions or in a luminaire that provides protection



Lamp suitable for 50 Hz or 60 Hz operation



Processing of electric and electronic equipment at the end of their service life. This symbol indicates that the product must not be processed with household waste. It must be brought to an electric and electronic waste collection point for recycling and disposal. Please contact your municipality, local waste disposal centre or the store where the product was purchased.



Please retain this Installation Guide for further reference
Tungsram Group disclaims liability for any damage caused by not following the instructions in this Installation Guide.
LEAFLET / LED HID/ 150W / TU - December 2018 - 99006659

GB/IE/MT	The English version of the installation instruction and safety information can be found at the following location:
DE	Die deutsche Version der Installationsanleitung und Sicherheitsinformationen finden Sie in folgendem Verzeichnis:
FR/LU	La version française des instructions d'installation et informations de sécurité est disponible à l'adresse suivante:
IT	La versione italiana del manuale di installazione e sicurezza può essere reperita nella seguente sezione:
ES	La versión española de las instrucciones de instalación y la información sobre seguridad puede encontrarse en la siguiente ubicación:
PT	A versão em Português das instruções de instalação e das informações de segurança pode ser encontrada na seguinte localização:
RO	Versiunea în limba română a instrucțiunilor de instalare și a informațiilor de siguranță pot fi găsite la:
PL	Polską wersję instrukcji instalacji oraz informacje dotyczące bezpieczeństwa można znaleźć w następującej lokalizacji:
CZ	Návod k montáži a bezpečnostní informace v češtině najdete zde:
SK	Slovenskú verziu montážnej príručky a bezpečnostných inštrukcií nájdete na nasledujúcej lokalite:
HR	Hrvatska verzija priručnika za ugradnju i sigurnosnih informacija nalazi se na sljedećoj lokaciji:
RS	Verziju uputstva za instalaciju i informacija o bezbednosti na srpskom jeziku možete pronaći na sledećoj lokaciji:
SI	Slovenska različica navodil za namestitve in varnostnih navodil se nahaja na naslednji strani:
HU	A telepítési útmutató és a biztonsági információk magyar nyelvű változata az alábbi címen található:
NL/BE	De Nederlandse versie van de installatie-instructies en veiligheidsinformatie kan op de volgende locatie worden gevonden:
DK	Den danske version af installationsvejledningen og sikkerhedsoplysninger kan findes på følgende placering:
FI	Asennusohjeiden ja turvallisuuksietojen suomenkielinen versio löytyy seuraavasta paikasta:
NO	Den norske versjonen av installasjonsinstruksjonene og sikkerhetsinformasjonen finnes under:
SE	Ni hittar den svenska versionen av installationsanvisningarna och säkerhetsinformationen på följande plats:
EE	Eestikeelse paigaldusjuhendi ja ohutusnõuded leiate aadressilt:
LV	Uzstādīšanas instrukciju un drošības informāciju latviešu valodā var atrast šeit:
LT	Lietuvišką diegimo instrukcijos ir saugos informacijos versiją galima rasti šioje vietoje:
GR/CY	Μπορείτε να βρείτε την ελληνική έκδοση των οδηγιών εγκατάστασης και των πληροφοριών ασφάλειας στην εξής τοποθεσία:
RU	Русскую версию инструкции по установке и технике безопасности можно найти здесь:
UA	Українська версія інструкції зі встановлення та інформація щодо безпеки знаходяться за такою адресою:
BG	Българската версия на инструкциите за инсталация и информация за безопасност могат да бъдат намерени на следния адрес:
ARAB	يمكن إيجاد النسخة العربية من إرشادات التثبيت ومعلومات الأمان على الموقع التالي:
TR	Montaj talimatı ve güvenlik bilgilerinin Türkçe sürümü, aşağıdaki konumda bulunabilir:

The English version of the installation instruction and safety information can be found at the following location:

tungsram.com/installations

tungsram.com

EMEA:
TUNGSRAM Operations Kft.
Váci út 77.
H-1044 Budapest
Hungary

Information provided is subject to change without notice. Please verify all details with Tungsram Group. All values are design or typical values when measured under laboratory conditions, and Tungsram Group makes no warranty or guarantee, express or implied, that such performance will be obtained under end-use conditions.

ID nr: GE2032-3957